



US006744880B1

(12) **United States Patent**
Jones et al.

(10) **Patent No.:** **US 6,744,880 B1**
(45) **Date of Patent:** **Jun. 1, 2004**

(54) **METHOD FOR CREATING A TELEPHONE DIGITAL SWITCHING PLATFORM**

(75) Inventors: **John P. Jones**, St. Louis, MO (US);
George E. Meyer, St. Louis County, MO (US)

(73) Assignee: **Telescan Corporation**, St. Louis, MO (US)

(*) Notice: Subject to any disclaimer, the term of this patent is extended or adjusted under 35 U.S.C. 154(b) by 0 days.

(21) Appl. No.: **09/484,296**

(22) Filed: **Jan. 18, 2000**

(51) Int. Cl.⁷ **H04J 3/12; H04M 3/00; H04M 7/00**

(52) U.S. Cl. **379/268; 370/467; 370/524; 379/229; 379/230; 379/233; 379/234; 379/235; 379/237**

(58) Field of Search **370/364, 524, 370/467, 522; 379/214.01, 218.01, 225, 242, 258, 268, 229, 230, 231, 232, 233, 234, 235, 236, 237**

(56) **References Cited**

U.S. PATENT DOCUMENTS

4,916,726 A * 4/1990 Morley et al. 379/88.13

5,113,429 A * 5/1992 Morley et al. 379/88.13
5,420,852 A 5/1995 Anderson et al. ... 379/214.01 X
5,649,005 A * 7/1997 Lynch et al. 379/242
5,715,307 A * 2/1998 Zazzera 379/265.03
5,719,855 A 2/1998 Ando et al. 370/280
5,875,234 A * 2/1999 Clayton et al. 379/93.05

* cited by examiner

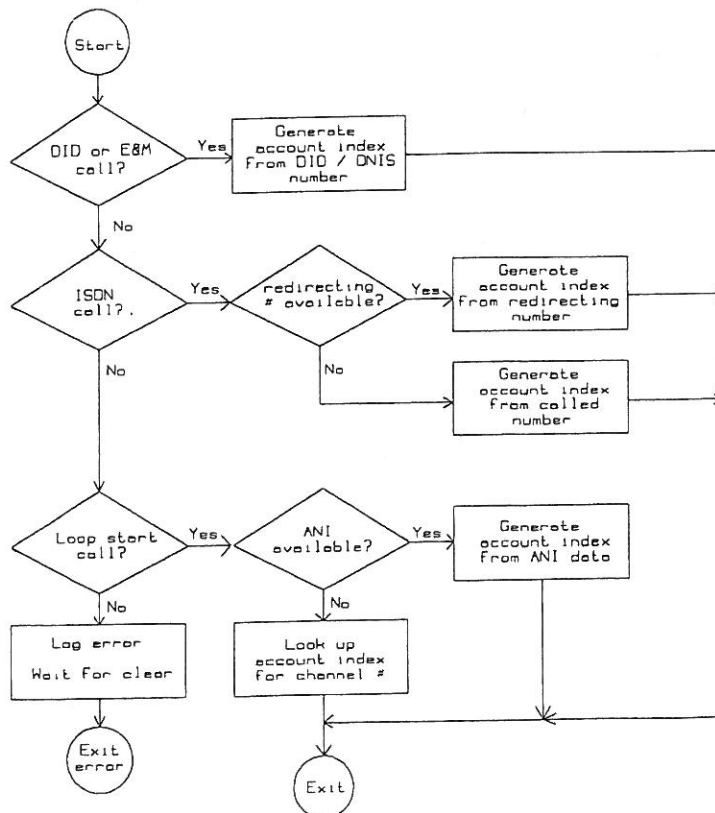
Primary Examiner—Harry S. Hong

(74) *Attorney, Agent, or Firm*—Paul M. Denk

(57) **ABSTRACT**

A method for creating a telephone digital switching platform to provide conversion and routing of telephone calls arriving on a number of telephony interfaces to a number of outbound telephony interfaces, based on in parameter and out of parameter call setup information. Receiving and transmitting interfaces can include, but are not limited to, Integrated Services Digital Network ("ISDN"), Digital Transmission Carrier System ("T-1"), DID ("Direct Inward Dial"), Loop Start, ("E & M") and Direct Outward Dial ("DOD"). Conversion and routing is performed by the steps of capture of call setup information, conversion to "dial number" via database lookup, selection of outbound pathway based on database information, and placement of outbound call and switched connection to inbound call.

22 Claims, 5 Drawing Sheets



S
X
7
-
e
e
7